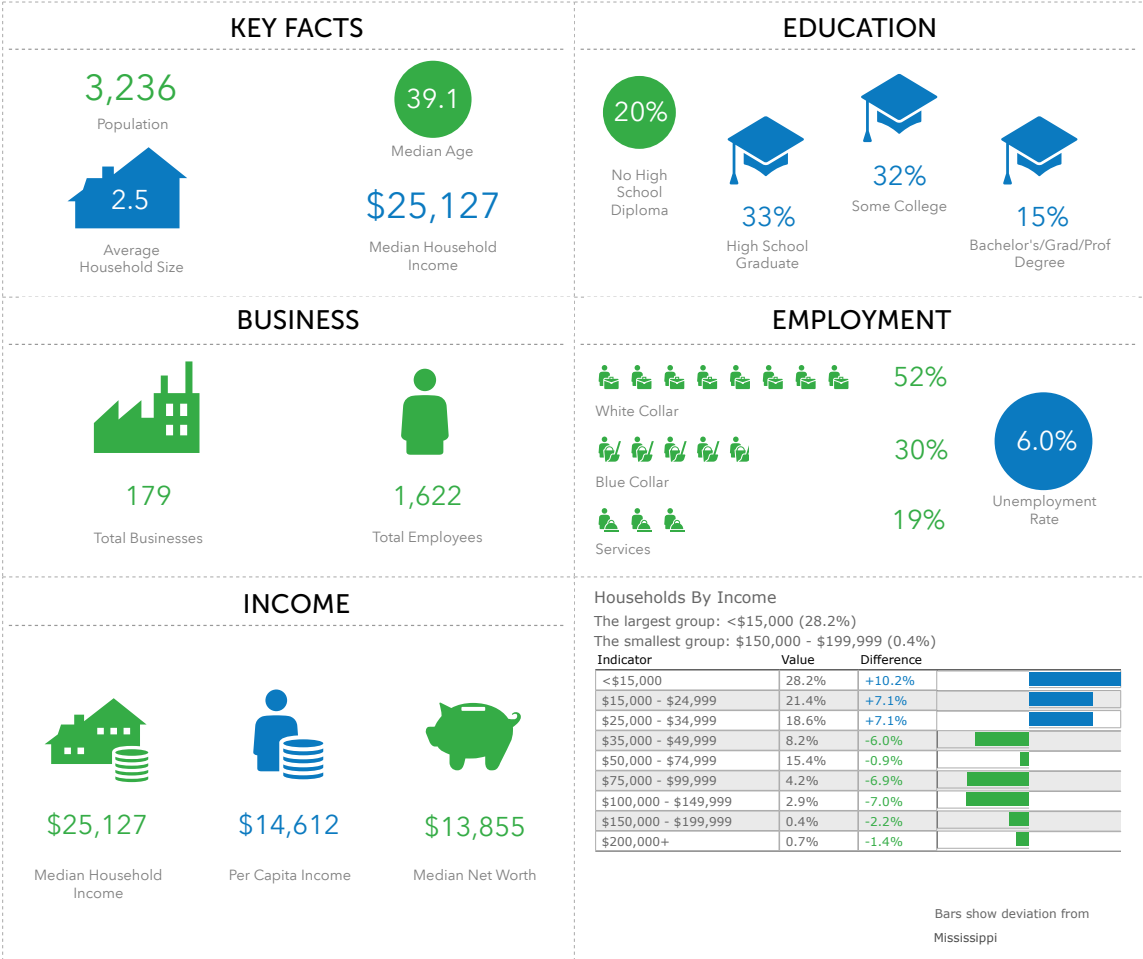


# BALDWIN

## 2018 KEY FACTS

Mayor Michael James  
 Baldwyn City Hall  
 P.O. Box 13, Baldwyn, Mississippi 38824  
 mjames.mayor@baldwynliving.com  
 (662) 687-2200 || www.baldwynliving.com



- ### RETAIL TRADE AREA
- 7 Mile Radius**
- Population: 12,654
  - Households: 4,849
  - Housing Units: 5,461
  - Total Employees: 3,943
  - Total Businesses: 294
  - Median HH Income: \$35,833
  - Average HH Income: \$48,390
- 10 Mile Radius**
- Population: 22,172
  - Households: 8,527
  - Housing Units: 9,954
  - Total Employees: 6,108
  - Total Businesses: 489
  - Median HH Income: \$40,806
  - Average HH Income: \$54,267

- Average Daily Traffic**
- U.S. Hwy 45: ADC of 11,000
  - MS Hwy 145: ADC of 3,000

The success of your business is important. The City of Baldwyn, in partnership with the Community Development Foundation, is committed to helping you locate the most appropriate site for your retail business and for its future success.

Baldwyn is located approximately 15 miles north of Tupelo, the major employment and retail destination of northeast Mississippi.

Downtown Baldwyn is experiencing a major renewal effort. It has become a local retail, entertainment, and tourism destination. Substantial private and public sector investments have been infused into this area.

